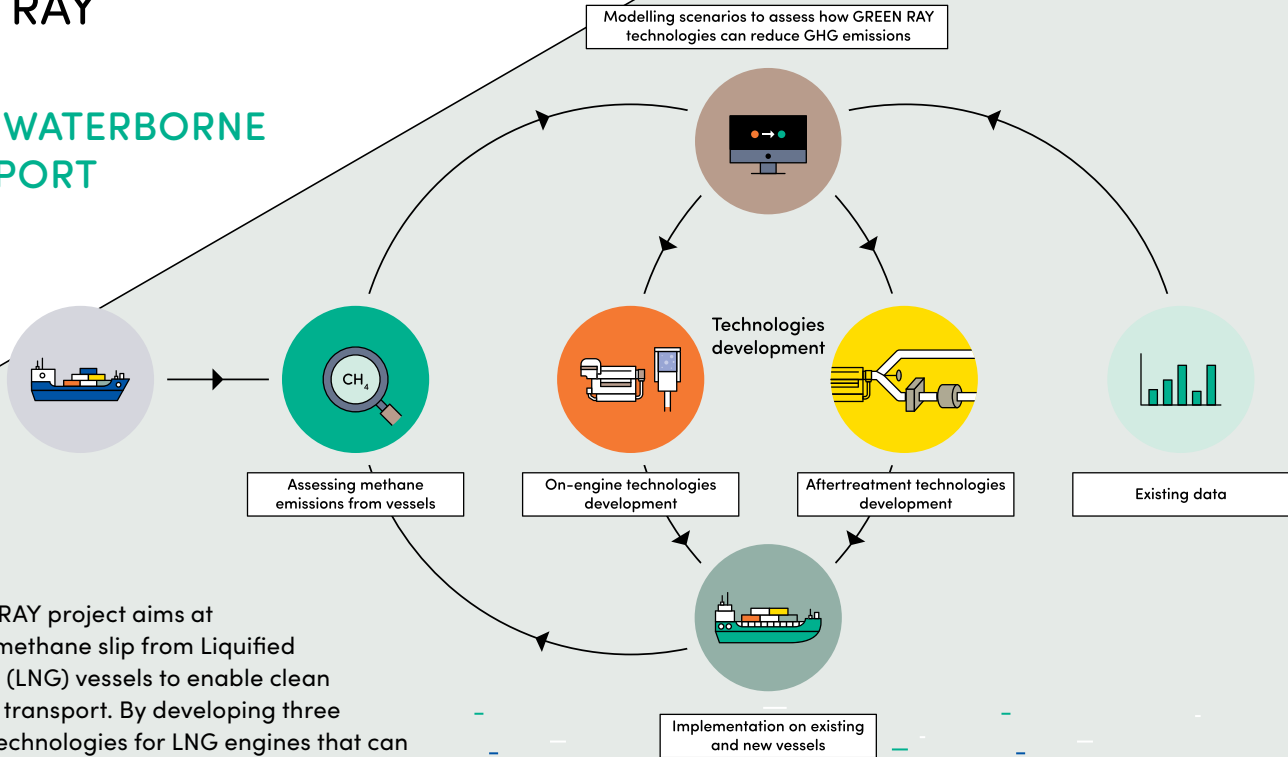




# CLEAN WATERBORNE TRANSPORT

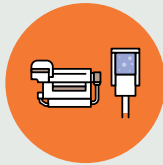


The GREEN RAY project aims at minimising methane slip from Liquefied Natural Gas (LNG) vessels to enable clean waterborne transport. By developing three innovative technologies for LNG engines that can be installed on new and existing ships, GREEN RAY is working to reduce the negative impact of waterborne transport and protect human and environmental health.

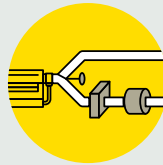
## Objectives



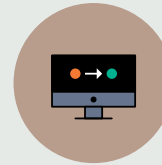
Assessing methane emissions from existing and new LNG vessels



Developing technologies to reduce methane slip in two- and four-stroke LNG engines



Developing an aftertreatment technology to further reduce methane slip



Modelling scenarios to assess how GREEN RAY technologies can reduce GHG emissions



Enabling the utilisation of GREEN RAY results for maximum research impact

## Get in touch

**Kati Lehtoranta**  
Project Coordinator | VTT  
[kati.lehtoranta@vtt.fi](mailto:kati.lehtoranta@vtt.fi)

**Rosa Vallespinós**  
Communications Lead | REVOLVE  
[rosa@revolve.media](mailto:rosa@revolve.media)



GREEN RAY Project



Funded by  
the European Union

Funded by the European Union. Views and opinions expressed are however those of the author(s) only and do not necessarily reflect those of the European Union or CINEA. Neither the European Union nor CINEA can be held responsible for them.

[www.greenray-project.eu](http://www.greenray-project.eu)